

## List of pages in this Trip Kit

Trip Kit Index

Airport Information For TTPP

Terminal Charts For TTPP

Revision Letter For Cycle 22-2020

Change Notices

Notebook

## General Information

Location: PORT OF SPAIN TTO  
ICAO/IATA: TTPP / POS  
Lat/Long: N10° 35.7', W061° 20.2'  
Elevation: 58 ft

Airport Use: Public  
Daylight Savings: Not Observed  
UTC Conversion: +4:00 = UTC  
Magnetic Variation: 15.0° W

Fuel Types: 100-130 Octane, Jet A-1  
Repair Types: Minor Airframe, Minor Engine  
Customs: Yes  
Airport Type: IFR  
Landing Fee: No  
Control Tower: Yes  
Jet Start Unit: No  
LLWS Alert: No  
Beacon: Yes

Sunrise: 1003 Z  
Sunset: 2139 Z

## Runway Information

Runway: 10  
Length x Width: 10495 ft x 148 ft  
Surface Type: asphalt  
TDZ-Elev: 30 ft  
Lighting: Edge, ALS, Centerline, TDZ

Runway: 28  
Length x Width: 10495 ft x 148 ft  
Surface Type: asphalt  
TDZ-Elev: 58 ft  
Lighting: Edge

## Communication Information

ATIS: 126.700  
Piarco Tower: 118.100  
Piarco Ground: 121.900  
Piarco Apron Ramp/Taxi: 121.750  
Piarco Approach: 119.000  
Piarco Approach: 119.550  
New York Arinc Radio: 1130.900 RCO  
New York Arinc Radio: 882.500 RCO

New York Arinc Radio: 296.200 RCO  
New York Arinc Radio: 2196.400 RCO  
New York Arinc Radio: 1795.200 RCO  
New York Arinc Radio: 662.800 RCO  
New York Arinc Radio: 1335.400 RCO

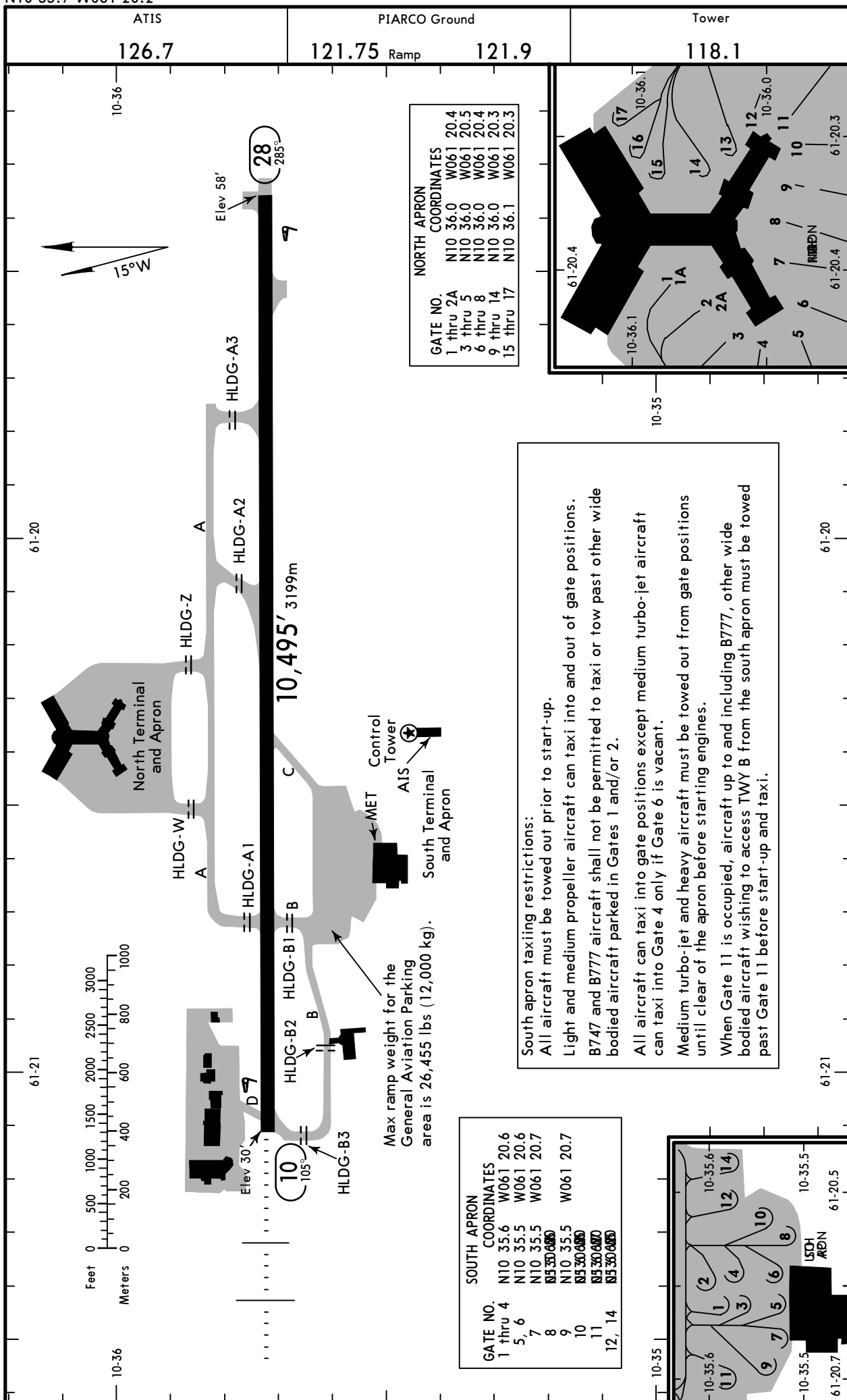
# TTPP/POS

Apt Elev **58'**  
N10 35.7 W061 20.2

# JEPPESSEN PORT OF SPAIN, TRINIDAD

2 OCT 20 **(10-9)** Eff 8 Oct

PIARCO INTL



**NORTH APRON COORDINATES**

GATE NO.	N10 36.0	W061 20.4
1 thru 2A	N10 36.0	W061 20.4
3 thru 5	N10 36.0	W061 20.5
6 thru 8	N10 36.0	W061 20.4
9 thru 14	N10 36.0	W061 20.3
15 thru 17	N10 36.1	W061 20.3

**SOUTH APRON COORDINATES**

GATE NO.	N10 35.6	W061 20.6
1 thru 4	N10 35.5 <td>W061 20.6</td>	W061 20.6
5, 6	N10 35.5 <td>W061 20.7</td>	W061 20.7
7	<del>N10 35.5</del>	<del>W061 20.7</del>
8	<del>N10 35.5</del>	<del>W061 20.7</del>
9	N10 35.5	W061 20.7
10	<del>N10 35.5</del>	<del>W061 20.7</del>
11	<del>N10 35.5</del>	<del>W061 20.7</del>
12, 14	<del>N10 35.5</del>	<del>W061 20.7</del>

**South apron taxiing restrictions:**  
 All aircraft must be towed out prior to start-up.  
 Light and medium propeller aircraft can taxi into and out of gate positions. B747 and B777 aircraft shall not be permitted to taxi or tow past other wide bodied aircraft parked in Gates 1 and/or 2.  
 All aircraft can taxi into gate positions except medium turbo-jet aircraft can taxi into Gate 4 only if Gate 6 is vacant.  
 Medium turbo-jet and heavy aircraft must be towed out from gate positions until clear of the apron before starting engines.  
 When Gate 11 is occupied, aircraft up to and including B777, other wide bodied aircraft wishing to access TWY B from the south apron must be towed past Gate 11 before start-up and taxi.

Max ramp weight for the General Aviation Parking area is 26,455 lbs (12,000 kg).

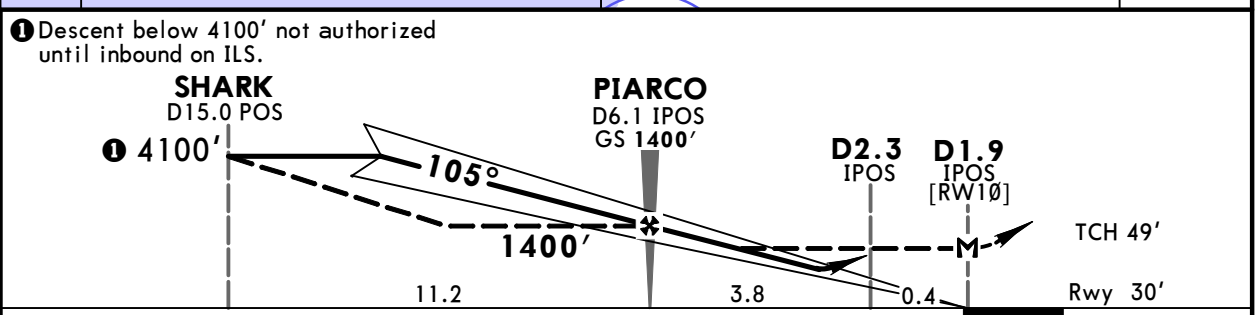
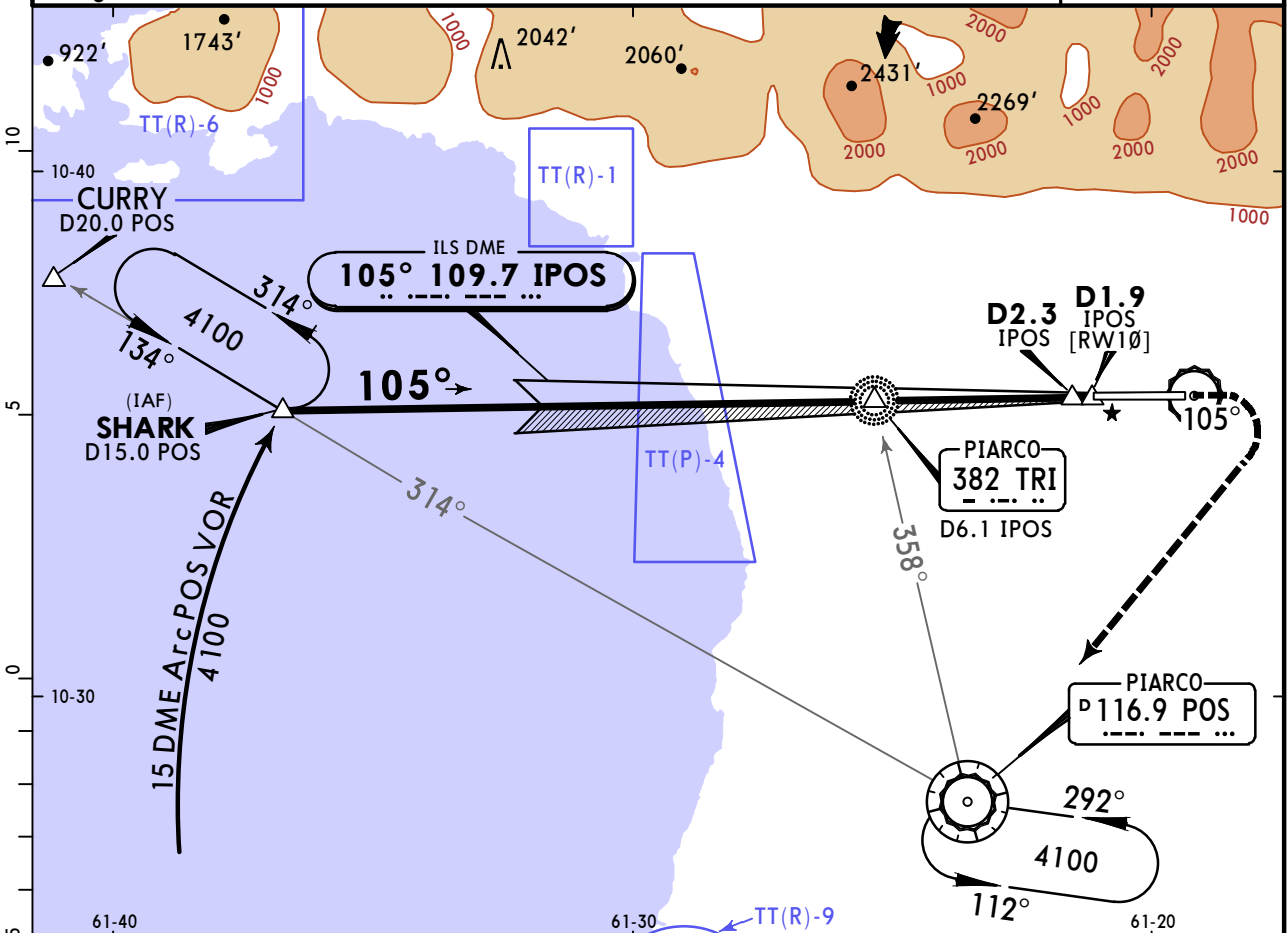


**TTPP/POS**  
**PIARCO INTL**

2 OCT 20 **(11-1)** Eff 8 Oct

**JEPPESSEN PORT OF SPAIN, TRINIDAD**  
**VOR ILS Rwy 10**

ATIS 126.7		PIARCO Approach 119.0 119.55		PIARCO Tower 118.1	Ground 121.9
LOC IPOS <b>109.7</b>	Final Apch Crs <b>105°</b>	PIARCO <b>1400'</b> (1370')	ILS DA(H) <b>265'</b> (235')	Apt Elev 58' Rwy 30'	4100  MSA TRI NDB
<b>MISSED APCH:</b> Climb to 2200' on 105°, then RIGHT climbing turn to 4100' to POS VOR and hold or as directed by ATC.					
Alt Set: hPa Rwy Elev: 1 hPa Trans level: FL 55 Trans alt: 4100'					
1. DME required. 2. Localizer restricted beyond 12° left of centerline due to rapidly rising terrain.					



Gnd speed-Kts	70	90	100	120	140	160	<b>2200'</b> ↑ on <b>105°</b> then RT <b>4100'</b> POS <b>116.9</b>
GS	3.00°	372	478	531	637	743	
MAP at D1.9 IPOS or PIARCO to MAP	4.2	3:36	2:48	2:31	2:06	1:48	1:34

<b>PANS OPS</b>	<b>Std</b> ILS STRAIGHT-IN LANDING			LOC (GS out) CDFA	
	DA(H) <b>265'</b> (235')			<b>2</b> DA/MDA(H) <b>530'</b> (500')	
	FULL	TDZ or CL out	ALS out	ALS out	
	A	R550m	<b>1</b> R550m	R1200m	R1500m
B				R1500m	
C				R2300m	
D					

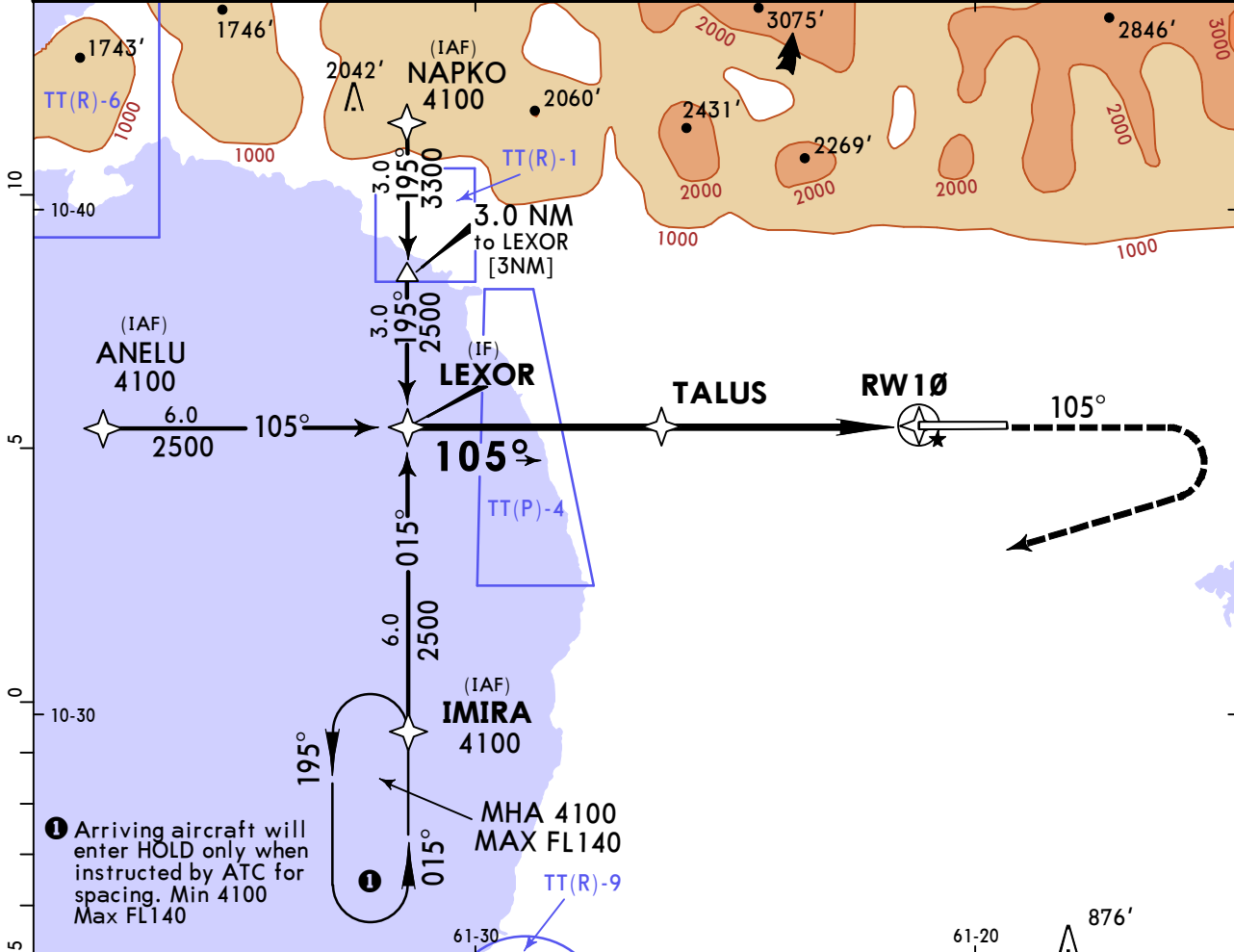
**1** R750m when a Flight Director or Autopilot or HUD to DA is not used.  
**2** VNAV DA(H) in lieu of MDA(H) depends on operator policy.

**TTPP/POS**  
**PIARCO INTL**

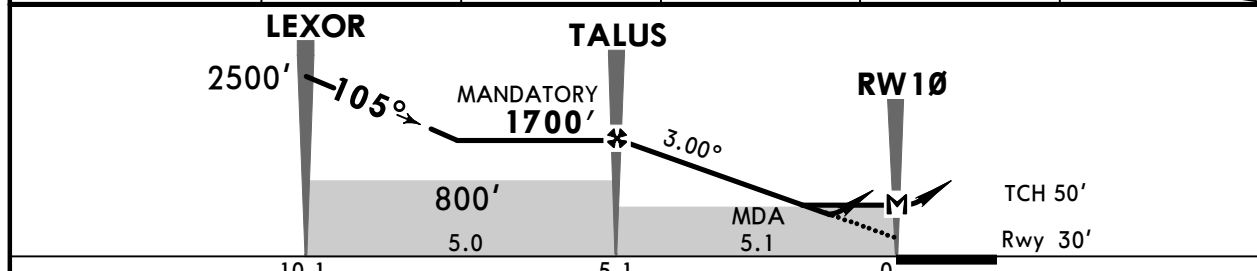
**JEPPESEN**  
21 AUG 20 **(12-1)**

**PORT OF SPAIN, TRINIDAD**  
**RNAV (GNSS) Rwy 10**

ATIS 126.7		PIARCO Approach 119.0 119.55		PIARCO Tower 118.1	Ground 121.9
RNAV	Final Apch Crs <b>105°</b>	<b>TALUS MANDATORY</b> 1700' (1670')	LNAV/VNAV DA(H) <b>350'</b> (320')	Apt Elev 58' Rwy 30'	4100 MSA ARP
<b>MISSED APCH:</b> Climb to 1500' on track 105° then climbing RIGHT turn to 4100' direct IMIRA and hold or as directed by ATC.					
Alt Set: hPa    TDZ Elev: 2 hPa    Trans level: FL 55    Trans alt: 4100'					
Baro-VNAV operations not authorized below 15°C.					



DIST to THR	5.0	4.0	3.0	2.0	RW10
ALTITUDE	1680'	1360'	1040'	720'	



Gnd speed-Kts	70	90	100	120	140	160	HIALS 1500'    4100'	PAPI ↑    ↻ RT	IMIRA
Descent Angle 3.00°	372	478	531	637	743	849			
LNAV/VNAV: MAP at DA									
LNAV: MAP at RW10									

<b>Std</b>	STRAIGHT-IN LANDING				CIRCLE-TO-LAND		No Circling CAT C & D 
	LNAV/VNAV		LNAV CDFA		Not authorized North of airport for CAT C & D		
	DA(H) 350' (320')		DA/MDA(H) 430' (400')		Max Kts		
	ALS out		ALS out		MDA(H)		
A				R1500m	100	670' (612')	V1500m
B				R1500m	135	670' (612')	V1600m
C	R750m	R1400m	R1100m	R1800m	180	710' (652')	V2400m
D					205	830' (772')	V3600m

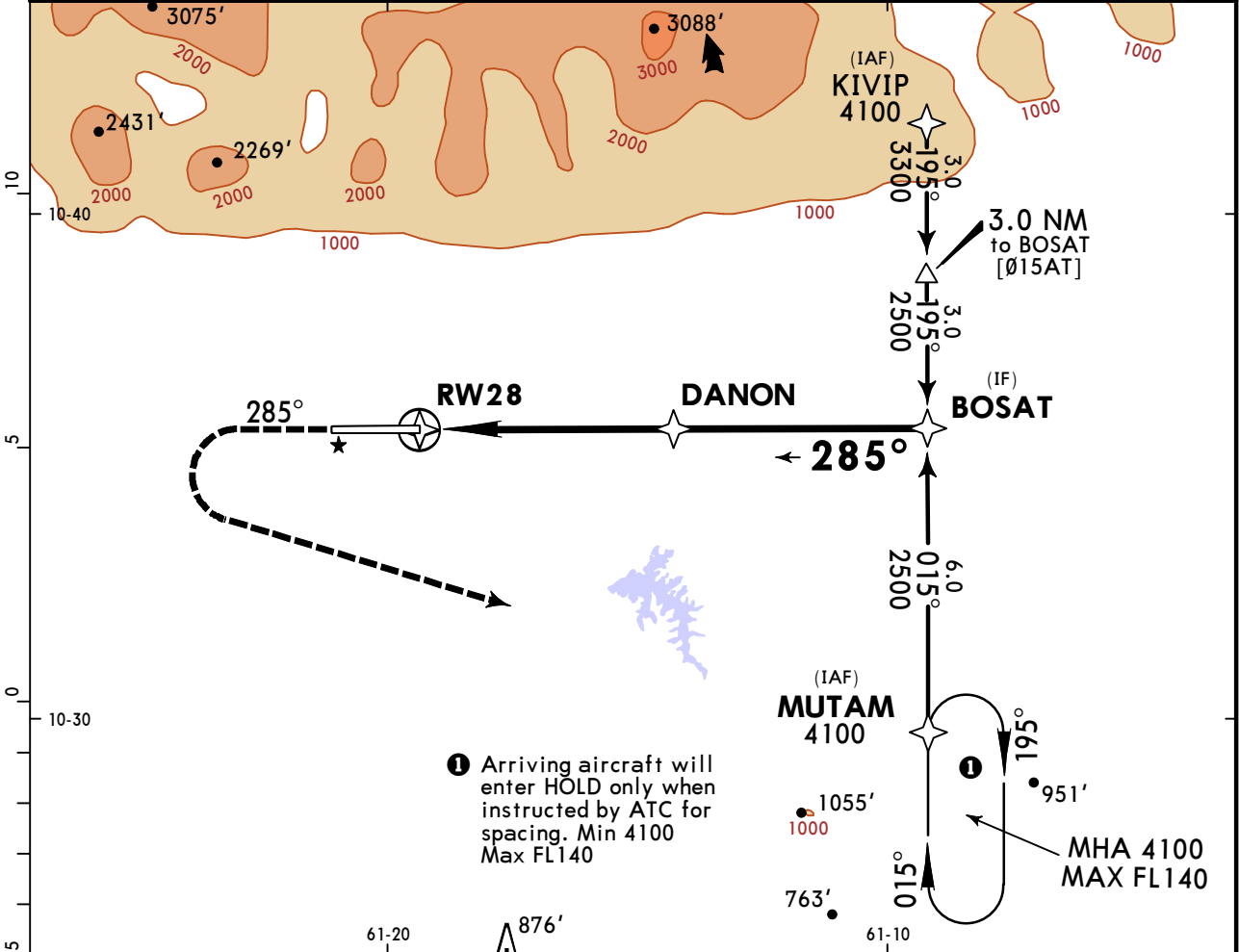
■ VNAV DA(H) in lieu of MDA(H) depends on operator policy.

**TTPP/POS**  
**PIARCO INTL**

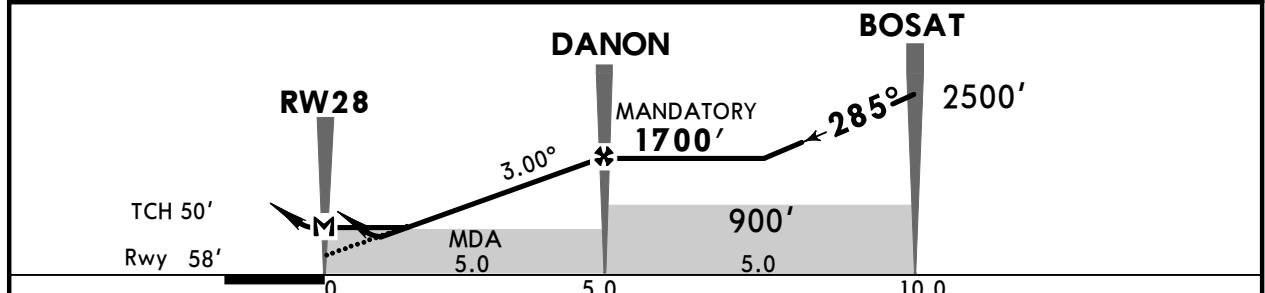
**JEPPESSEN**  
21 AUG 20 **(12-2)**

**PORT OF SPAIN, TRINIDAD**  
**RNAV (GNSS) Rwy 28**

ATIS <b>126.7</b>		PIARCO Approach <b>119.0 119.55</b>		PIARCO Tower <b>118.1</b>	Ground <b>121.9</b>
RNAV	Final Apch Crs <b>285°</b>	DANON MANDATORY <b>1700'</b> (1642')	LNAV/VNAV DA(H) <b>360'</b> (302')	Apt Elev 58' Rwy 58'	4100  MSA ARP
MISSED APCH: Climb to 1000' on track 285° then climbing LEFT turn to 4100' direct MUTAM and hold or as directed by ATC.					
Alt Set: hPa TDZ Elev: 2 hPa Trans level: FL 55 Trans alt: 4100' Baro-VNAV operations not authorized below 15°C.					



DIST to THR	RW28	2.0	3.0	4.0	5.0
ALTITUDE		750'	1070'	1390'	1700'



Gnd speed-Kts	70	90	100	120	140	160	1000'	4100'	D → MUTAM
Descent Angle 3.00°	372	478	531	637	743	849			
LNAV/VNAV: MAP at DA							↑	LT	
LNAV: MAP at RW28									

PANS OPS	<b>Std</b> STRAIGHT-IN LANDING		CIRCLE-TO-LAND Not authorized North of airport for CAT C & D		No Circling CAT C & D 	
	LNAV/VNAV DA(H) <b>360'</b> (302')		LNAV CDFA DA/MDA(H) <b>490'</b> (432')			
	A	R1400m	R1500m	Max Kts 100		670' (612') V1500m
	B			135		670' (612') V1600m
	C			180		710' (652') V2400m
D	205			830' (772') V3600m		
VNAV DA(H) in lieu of MDA(H) depends on operator policy.						

## Chart changes since cycle 21-2020

ADD = added chart, REV = revised chart, DEL = deleted chart.

ACT	PROCEDURE IDENT	INDEX	REV DATE	EFF DATE
-----	-----------------	-------	----------	----------

**PORT OF SPAIN, (PIARCO INTL - TTPP)**

## TERMINAL CHART CHANGE NOTICES

### Chart Change Notices for Airport TTPP

**Type:** Terminal

**Effectivity:** Temporary

**Begin Date:** 20200709

**End Date:** 20220709

Model Aircraft Display at Frederick Settlement within a radius of 1 KM centered on N10 35.6 W061 23.6 from surface to 400' AGL. Pilots flying in the area are asked to exercise caution.